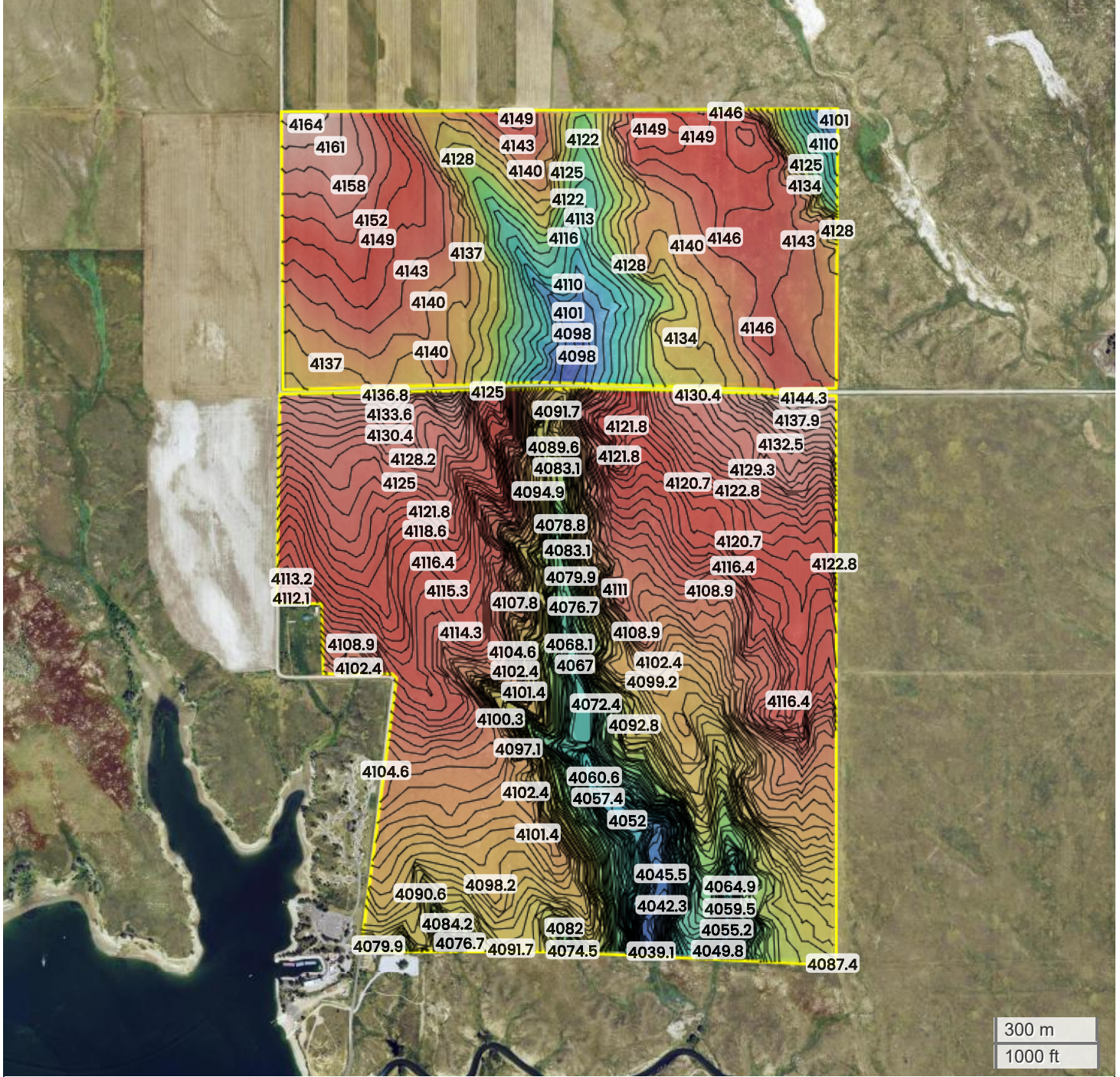




EAST PASTURE (SEC 26 & 35) (890.99 AC TOTAL, 611.07 AC TILLABLE)
TOPOGRAPHY



4039 ft

4164 ft



Center: 40.800095, -103.257879

Source: USGS 10m DEM

Interval(ft): 3

Max: 4164.0 ft

Min: 4039.1 ft

Range: 124.9 ft

Average: 4101.5 ft



35-10N-53W
Sterling CCD
Logan County, CO

FarmWorth, LLC makes no warranties, express or implied, regarding the accuracy of any information provided through FarmWorth.com. User is solely responsible for independently verifying all information prior to use and waives any claims against FarmWorth, LLC arising from inaccuracies in such information.